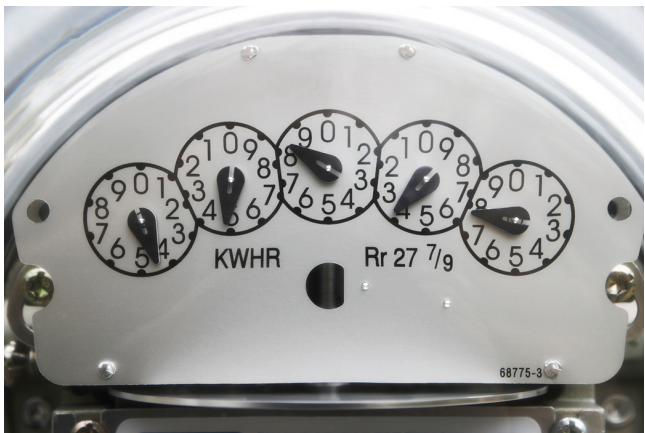


Health & Beauty	Typical Wattage (Watts)	Avg. Hrs Usage/ Month	Avg. kWh/ Month	Typical Monthly Cost
Adjustable Bed	85	120	10.2	\$0.66
Air Purifier	120	720	86.0	\$5.59
Electric Blanket	100	90	9.0	\$0.59
Hair Dryer	1,500	10	15.0	\$0.98
Heat Lamp	250	20	5.0	\$0.33
Heating Pad	75	20	1.5	\$0.10
Humidifier	75	200	15.0	\$0.98
Kidney Dialysis Machine	1,450	65	94.2	\$6.12
Nebulizer Pump	1,035	45	47.0	\$3.06
O ₂ Concentrator	460	720	331.0	\$21.52
Treadmill 2 H.P.	1,500	15	23.0	\$1.50
Water Distiller 0.25 Gal/hour	1,250	4	5.0	\$0.33

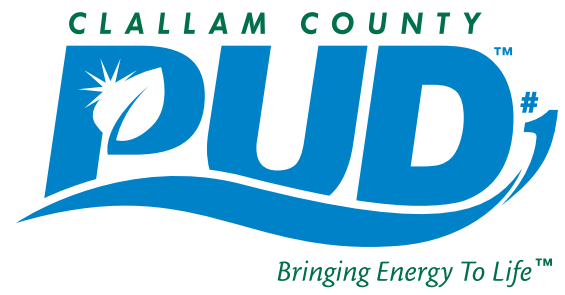
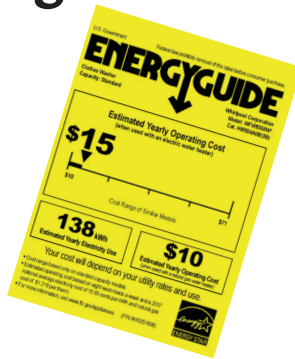
Tools & Equipment	Typical Wattage (Watts)	Avg. Hrs Usage/ Month	Avg. kWh/ Month	Typical Monthly Cost
Compressor 1HP	600	20	12.0	\$0.78
Bug Zapper	40	300	12.0	\$0.78
3/8" Drill	400	10	4.0	\$0.26
Bench Grinder	600	2	1.2	\$0.08
Grinder (hand-held)	500	2	1.0	\$0.07
Lawn Mower	1,500	5	8.0	\$0.52
Motor - 1 H.P.	600	20	12.0	\$0.78
Sander, Belt	300	5	1.5	\$0.10
Sander, Orbital	500	5	2.5	\$0.16
Saw, Circular	1,000	5	5.0	\$0.33
12" Chain Saw	440	8	3.5	\$0.23
Saw, Reciprocating	750	5	3.5	\$0.23
Saw -- Saber	400	5	2.0	\$0.13
Saw -- 10" Table	1,800	5	9.0	\$0.59
Soldering Gun	600	10	6.0	\$0.39
Weed Whacker	500	5	2.0	\$0.13

For more information, visit: www.clallampud.net or call: (360) 452-9771 or (800) 542-7859.

July 2011



Residential Appliance Energy Usage Guide



This guide provides typical wattages for many household appliances as well as monthly usage costs at an electric rate of \$0.065/Kilowatt-hour (kWh). Today's appliances are generally much more efficient than those made five or more years ago. For the most efficient appliances, look for the ENERGY STAR® label and compare ENERGY GUIDES™. To calculate appliance usage costs, use the below formulas:

$$\text{Watts}/1000 \times \text{hours used} = \text{Kilowatt hours (kWh)}$$

$$\text{kWh} \times \text{electrical rate} = \text{usage cost}$$

Kitchen Appliances: Small	Typical Wattage (Watts)	Avg. Hrs Usage/ Month	Avg. kWh/ Month	Typical Monthly Cost
Blender	300	2	0.6	\$0.04
Bread Maker	500	7	3.5	\$0.23
Broiler	1,500	8	12.0	\$0.78
Can Opener	100	8	11.0	\$0.72
Coffee Maker	900	13	12.0	\$0.78
Crock Pot/	150	34	5.1	\$0.33
Deep Fat Fryer	1,500	3	4.0	\$0.26
Electric Frying Pan	1,500	10	15.0	\$0.98
Electric Grill - Counter Top	1,425	8	11.0	\$0.72
Electric Kettle	1,200	2.5	3.0	\$0.20
Food Processor	360	2	0.7	\$0.05
Microwave Oven -- 0.75 cu. Ft.	500	10	5.0	\$0.33
Microwave Oven -- 1.25 cu. Ft.	1,500	10	15.0	\$0.98
Mixer - Stand	100	10	1.0	\$0.07
Popcorn Maker	1,400	1	1.4	\$0.09
Range Hood w/ Light & Fan	185	30	5.6	\$0.36
Rice Cooker	500	4	2.0	\$0.13
Toaster	1,000	3	3.0	\$0.20
Toaster Oven	1,500	15	22.5	\$1.46
Waffle Iron	1,200	5	6.0	\$0.39
Water Cooler w/ Hot Water	600	720	65.0	\$4.23

Kitchen Appliances: Large	Typical Wattage (Watts)	Avg. Hrs Usage/ month	Avg. kWh/ Month	Typical Monthly Cost
Dishwasher	1,050	30	31.5	\$2.05
Dishwasher -- Energy Star	805	30	24.2	\$1.57
Electric Range/ Oven: oven on	1,100	15	16.5	\$1.07
Electric Oven: on self-cleaning	5,000	1	5.0	\$0.33
Electric Range: small element	1,400	15	21.0	\$1.37
Electric Range: large element	2,500	15	37.5	\$2.44
Electric Range/ Oven: broiler on	3,200	15	48.0	\$3.12
Freezer - 17ft ³	600	720	216.0	\$14.04
Freezer - 17ft ³ Energy Star	143	720	51.2	\$3.33
Refrig. - 1.7ft ³	126	720	30.0	\$1.95
Refrig. - 1.7ft ³ Energy Star	105	720	22.7	\$1.48
Refrig. - 14ft ³	383	720	91.0	\$5.92
Refrig. - 14ft ³ Energy Star	116	720	33.3	\$2.16
Refrig. 17ft ³	463	720	110.0	\$7.15
Refrig. 17ft ³ -- Energy Star	110	720	31.2	\$2.03
Refrig. 19ft ³	509	720	121.0	\$7.87
Refrig. 19ft ³ -- Energy Star	122	720	35.2	\$2.29
Refrig. 21ft ³	572	720	136.0	\$8.84
Refrig. 21 ft ³ -- Energy Star	134	720	38.7	\$2.52
Refrig. 24ft ³	653	720	155.0	\$10.08
Refrig. 24 ft ³ -- Energy Star	142	720	40.9	\$2.66
Refrig. 25ft ³ SxS	841	720	200.0	\$13.00
Refrig. 25ft ³ SxS Energy Star	168	720	48.3	\$3.14

Heating & Air Conditioning	Typical Wattage (Watts)	Avg. Hrs Usage/ Month	Avg. kWh/ Month	Typical Monthly Cost
AC (Window) - 5,000 BTU	500	200	75.0	\$4.88
AC (Window) - 10,000 BTU	1,000	200	150.0	\$9.75
Dehumidifier - 65 pint	790	11.2	8.8	\$0.57
4' Baseboard	1,000	150	150.0	\$9.75
6' Baseboard	1,500	150	225.0	\$14.63
8' Baseboard	2,000	150	300.0	\$19.50
Electric Forced Air Furnace	10,000	150	1500.0	\$97.50
Electric Forced Air Furnace	15,000	150	2250.0	\$146.25
Electric Wall Heater	1,500	150	225.0	\$14.63
Electrostatic Air Cleaner	50	240	12.0	\$0.78
Fan (Ceiling)	100	330	33.0	\$2.15
Fan (Exhaust, mid-size)	150	25	3.8	\$0.25
20" Portable Fan	115	35	4.0	\$0.26
30" Whole House Fan	400	180	72.0	\$4.68
Furnace Fan	350	720	252.0	\$16.38
Ductless Heat Pump -36k BTU	3,600	180	648.0	\$42.12
Heat Pump -- Standard	5,000	150	750.0	\$48.75
Heat Pump -- Standard	10,000	150	1500.0	\$97.50
Portable Heater - Low Setting	750	75	56.0	\$3.64
Portable Heater -Medium Setting	1,000	75	75.0	\$4.88
Portable Heater - High Setting	1,500	75	112.0	\$7.28

Water Heating & Circulation	Typical Wattage	Avg. Hrs Usage/ Month	Avg. kWh/ Month	Typical Monthly Cost
Aquarium Pump (10 Gallon)	80	720	29.0	\$1.89
Aquarium Pump (50 Gallon)	230	720	83.0	\$5.40
Bathtub w/ Jets	75	20	1.5	\$0.10
Hot Tub Heater	5,000	183	915.0	\$59.48
Hot Tub Pump	1,000	30	30.0	\$1.95
H ₂ O Purification	440	65	28.6	\$1.86
Pool Filter Pump	600	720	432.0	\$28.08
H ₂ O Bed Heater	250	240	60.0	\$3.90
30-50 Gal. H ₂ O Heater: 2 users	4,500	92	414.0	\$26.91
30-50 Gal. H ₂ O Heater: 4 users	4,500	138	621.0	\$40.37
60-120 Gal. H ₂ O Heater: 4 users.	6,000	138	828.0	\$53.82
Tankless H ₂ O Heater: 2 users	14,000	30	420.0	\$27.30
Tankless H ₂ O Heater: 4 users	28,000	45	1260.0	\$81.90
Water Pump	900	43	39.0	\$2.54
Well Pump	660	60	39.6	\$2.57
Laundry & Cleaning				
Laundry & Cleaning	Typical Wattage (Watts)	Avg. Hrs Usage/ Month	Avg. kWh/ Month	Typical Monthly Cost
Clothes Dryer	3,400	40	136.0	\$8.84
Top-load washer	543	35	19.0	\$1.24
Energy Star Top-load washer	429	35	15.0	\$0.98
Energy Star Front-load washer	357	35	12.5	\$0.81
“ Most efficient “	237	35	8.3	\$0.54
Iron	1,100	10	6.0	\$0.39
Vacuum Cleaner	800	10	8.0	\$0.52

Lighting	Typical Wattage (Watts)	Avg. Hrs Usage/ Month	Avg. kWh/ Month	Typical Monthly Cost
100 standard holiday mini-lights	100	150	15	\$0.98
100 standard holiday 5-W lites	500	150	75.0	\$4.88
100 LED holiday mini-lights	5	150	0.75	\$0.05
60 Watt Incandescent Bulb	60	240	14.0	\$0.91
60-W equivalent 50-W Halogen	50	240	12.0	\$0.78
60-W-equivalent CFL 15-W Bulb	15	240	4.6	\$0.30
60-W-equivalent 12-W LED	12	240	2.9	\$0.19
75 Watt Incandescent Bulb	75	240	18.0	\$1.17
75-W-equivalent CFL 20-W Bulb	20	240	4.8	\$0.31
100 Watt Incandescent Bulb	100	240	24.0	\$1.56
110-W-equivalent Halogen 90-W	90	240	22.0	\$1.43
100-W-equivalent CFL 25-W Bulb	25	240	6.0	\$0.39
150-W Incandescent Bulb	150	240	36.0	\$2.34
150-W-equivalent CFL 45-W Bulb	45	240	10.8	\$0.70
4' Fluorescent Fixture: 2 bulbs	100	240	24.0	\$1.56
High-Pressure Sodium: 2-bulbs	150	300	45	\$2.93
Mercury Vapor Floodlight	150	300	45.0	\$2.93
Bulb Lifespan by Type: 1) Incandescent = 750 - 1,000 hrs; 2) CFL= 6,000 - 10,000 hrs; 3) LED = 18,000 - 25,000 hrs				

Entertainment	Typical Wattage (Watts)	Avg. Hrs Usage/ Month	Avg. kWh/ Month	Typical Monthly Cost
Cable Converter	20	300	6.0	\$0.39
DVD	22	120	2.6	\$0.17
DVR	30	720	21.6	\$1.40
TIVO	30	720	21.6	\$1.40
VCR	10	30	0.3	\$0.02
Home Theater Receiver	100	180	18.0	\$1.17
Satellite Dish	15	180	2.7	\$0.18
Boombox	30	40	1.2	\$0.08
Stereo	75	130	10.0	\$0.65
27" Standard T.V.	71	150	10.6	\$0.69
32" Standard T.V.	97	150	14.6	\$0.95
32" LCD T.V.	110	150	16.5	\$1.07
43" Standard T.V.	171	150	25.6	\$1.66
46" LCD T.V.	240	150	36.0	\$2.34
46" LED T.V.	220	150	33.0	\$2.15
46" Plasma T.V.	310	150	46.5	\$3.02
46" Projection T.V.	300	150	45.0	\$2.93
Microsoft Xbox 360	88	150	13.2	\$0.86
Nintendo Wii	14	150	2.1	\$0.14
Sony PlayStation 3	85	150	12.8	\$0.83
Office Equipment				
Office Equipment	Typical Wattage (Watts)	Avg. Hrs Usage/ Month	Avg. kWh/ Month	Typical Monthly Cost
Computer & Monitor	270	120	32.0	\$2.08
Laptop	40	90	3.6	\$0.23
Modem	6	180	1.1	\$0.07
Ink-jet (on standby)	7	705	4.9	\$0.32
Ink-jet (Printing)	64	15	1.0	\$0.06
Laser Printer (on standby)	19	705	13.4	\$0.87
Laser Printer (Printing)	130	15	2.0	\$0.13