

**NEWS RELEASE**  
**North Olympic Library System**  
**2210 South Peabody Street**  
**Port Angeles, WA 98362**

## **FOR IMMEDIATE RELEASE**

**Date:** March 23, 2017  
**Contact:** Jina Felton, Library Operations Manager, Port Angeles Main Library  
360.417.8500; Discover@nols.org  
**Re:** Port Angeles Main Library to host traveling exhibit *The Tragedy of War: Japanese American Internment*  
**Attached:** IAmAnAmerican Sign-1g.jpg

This April, in recognition of the 75<sup>th</sup> anniversary of Japanese American Internment, the Port Angeles Main Library of the North Olympic Library System (NOLS) will host the traveling exhibit *The Tragedy of War: Japanese American Internment*. The exhibit will be on display from April 6 through April 27, 2017. Opening of the exhibit will coincide with Humanities Washington speaker Mayumi Tsutakawa's talk *The Pine and The Cherry*, which will focus on her family's history through interment. Ms. Tsutakawa will speak at the Port Angeles Main Library on Saturday, April 8, at 4pm.

### ***The Tragedy of War: Japanese American Internment***

During World War II, 120,000 Japanese, two-thirds of them American citizens, were forced into camps to live under armed guard. Japanese American confinement was authorized by President Franklin D. Roosevelt, and supported by Congress and the Supreme Court with Executive Order 9066, premised on the fear that Japanese residents were disloyal and might aid in an invasion of the United States. Japanese Americans contested these charges throughout the war and later sought formal redress. In 1983, a bipartisan congressional committee concluded that the confinement resulted from war hysteria, failure of government and military leadership, and racism towards those of Japanese ancestry. *The Tragedy of War* exhibit revisits the injustice

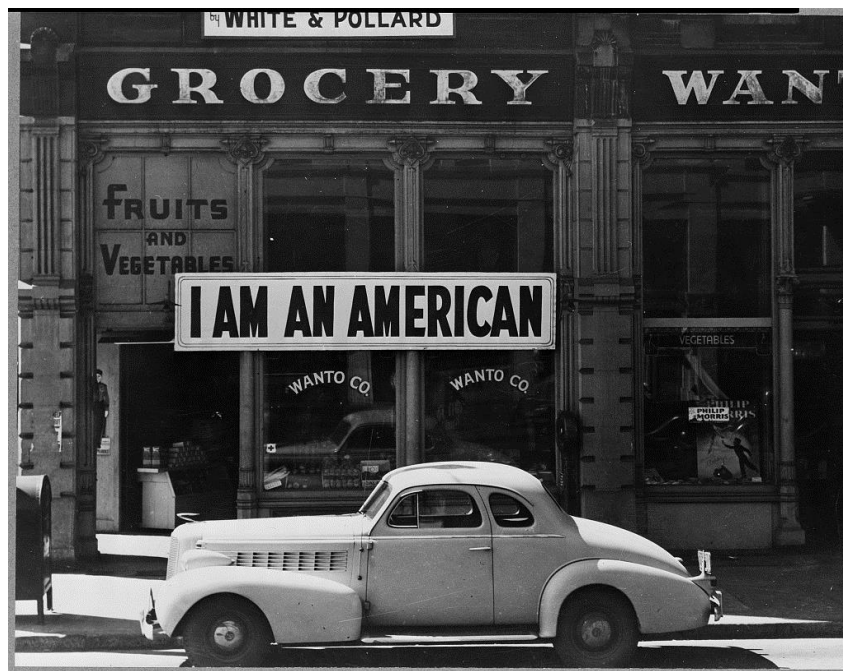
of Japanese American confinement by asking the question: at what point should the rights of citizens be limited or denied to ensure our nation is secure?

This exhibit is provided by Kennesaw State University's Museum of History and Holocaust Education. Additional information about the exhibit, including study guides, can be found at [http://historymuseum.kennesaw.edu/exhibitions/traveling\\_tragedy\\_of\\_war.php](http://historymuseum.kennesaw.edu/exhibitions/traveling_tragedy_of_war.php).

### **More information**

For additional information about this program, visit [www.nols.org](http://www.nols.org) and select "Events," contact the Port Angeles Main Library at 360.417.8500, or send an email to [Discover@nols.org](mailto:Discover@nols.org).

Programs like this are offered free to the public with generous support from the Port Angeles Friends of the Library. The Port Angeles Main Library is located at 2210 South Peabody Street.



*Image from the Library of Congress. Oakland, California. A large sign reading "I am an American" placed in the window of a store on December 8, the day after Pearl Harbor. The store was closed following orders to persons of Japanese descent to evacuate from certain West Coast areas. The owner, a University of California graduate, will be housed with hundreds of evacuees in War Relocation Authority centers for the duration of the war.*

###