

SEQUIM LIBRARY RENOVATION AND EXPANSION

COMMUNITY MEETING
SEPTEMBER 27, 2022

SCHEDULE

PRE-DESIGN RECAP

SCHEMATIC DESIGN

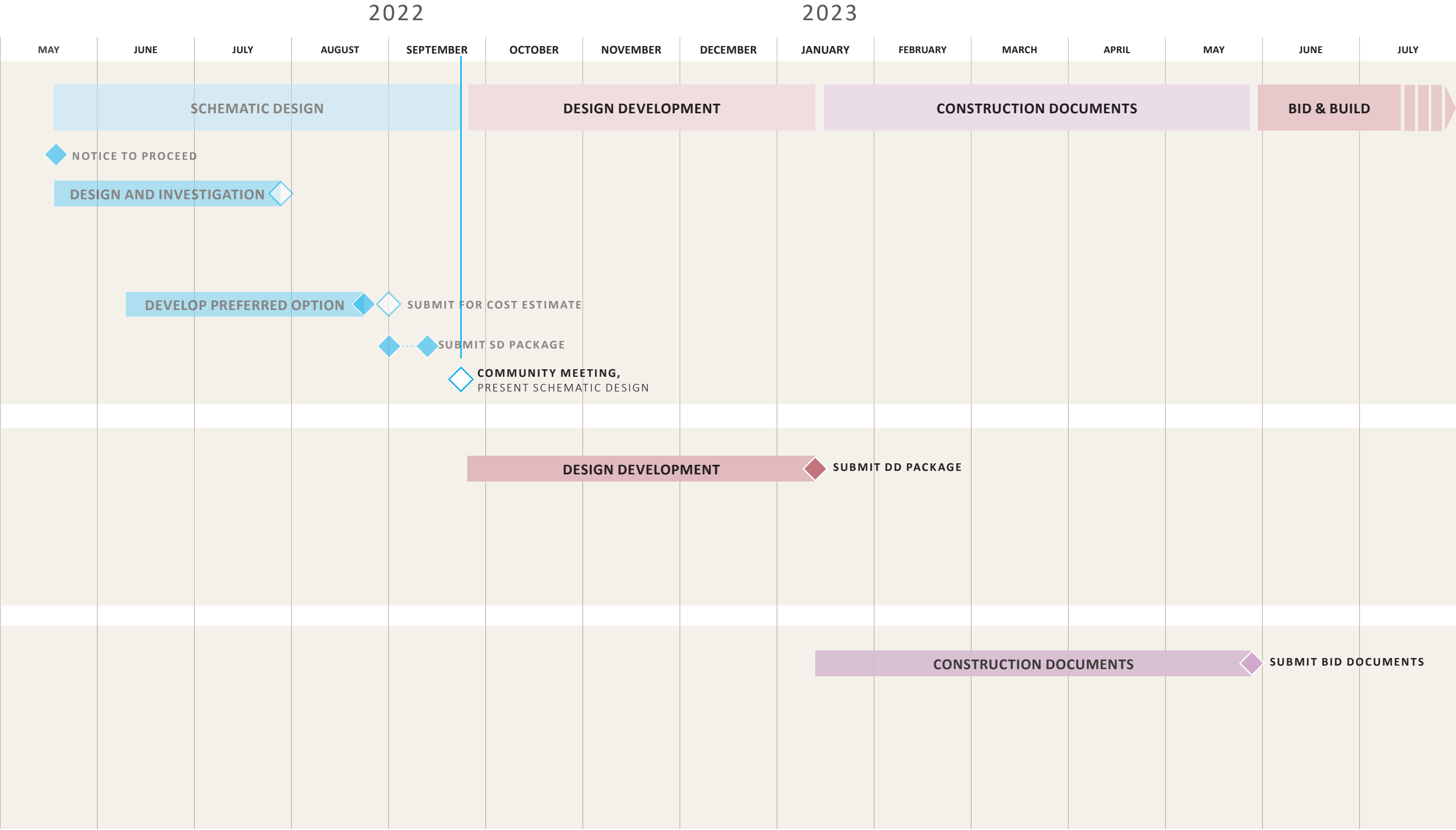
COST

FEEDBACK

AGENDA

COMMUNITY MEETING | SEPTEMBER 27, 2022

S H K S ARCHITECTS

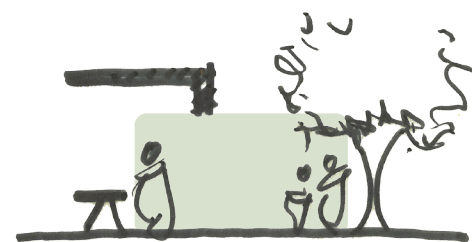


SCHEDULE

COMMUNITY MEETING | SEPTEMBER 27, 2022



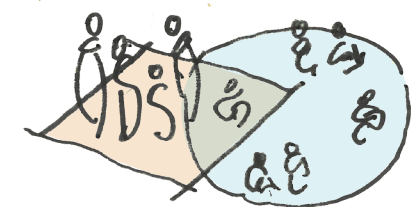
SIGHTLINES



ACCESS TO EXTERIOR



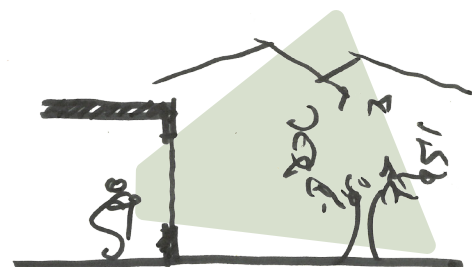
ACTIVITY SEPARATION



FLEXIBLE SPACE



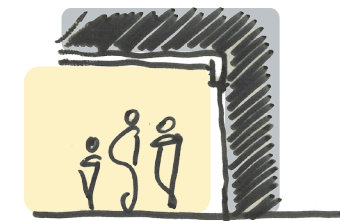
DAYLIGHT



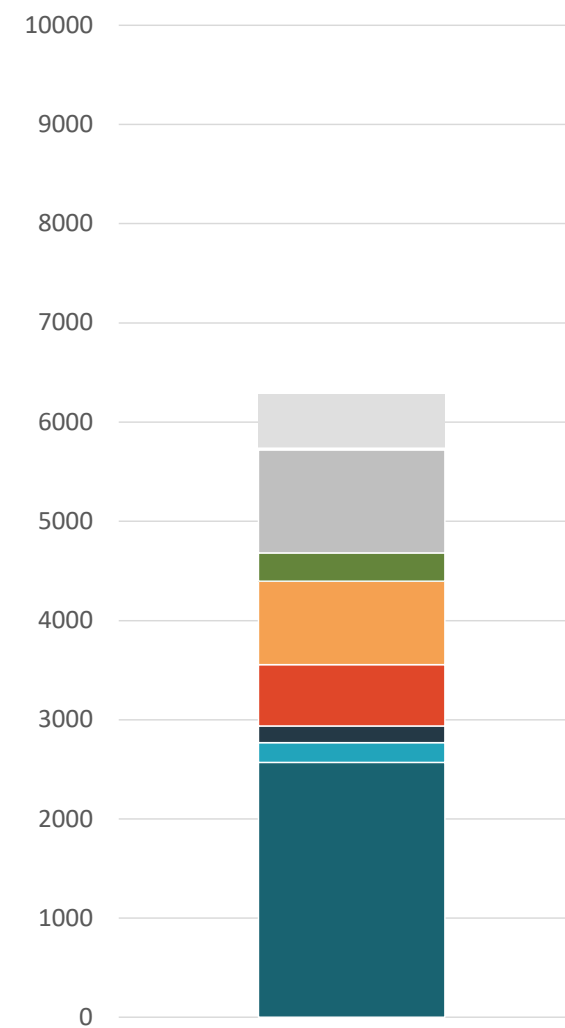
VIEWS TO OUTSIDE



MOVEMENT

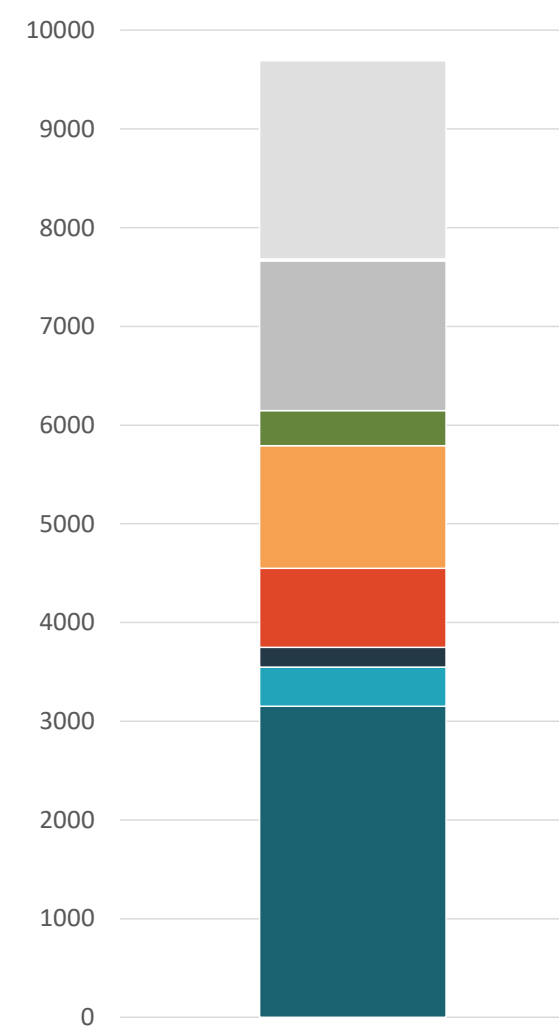


AFTER HOURS USE



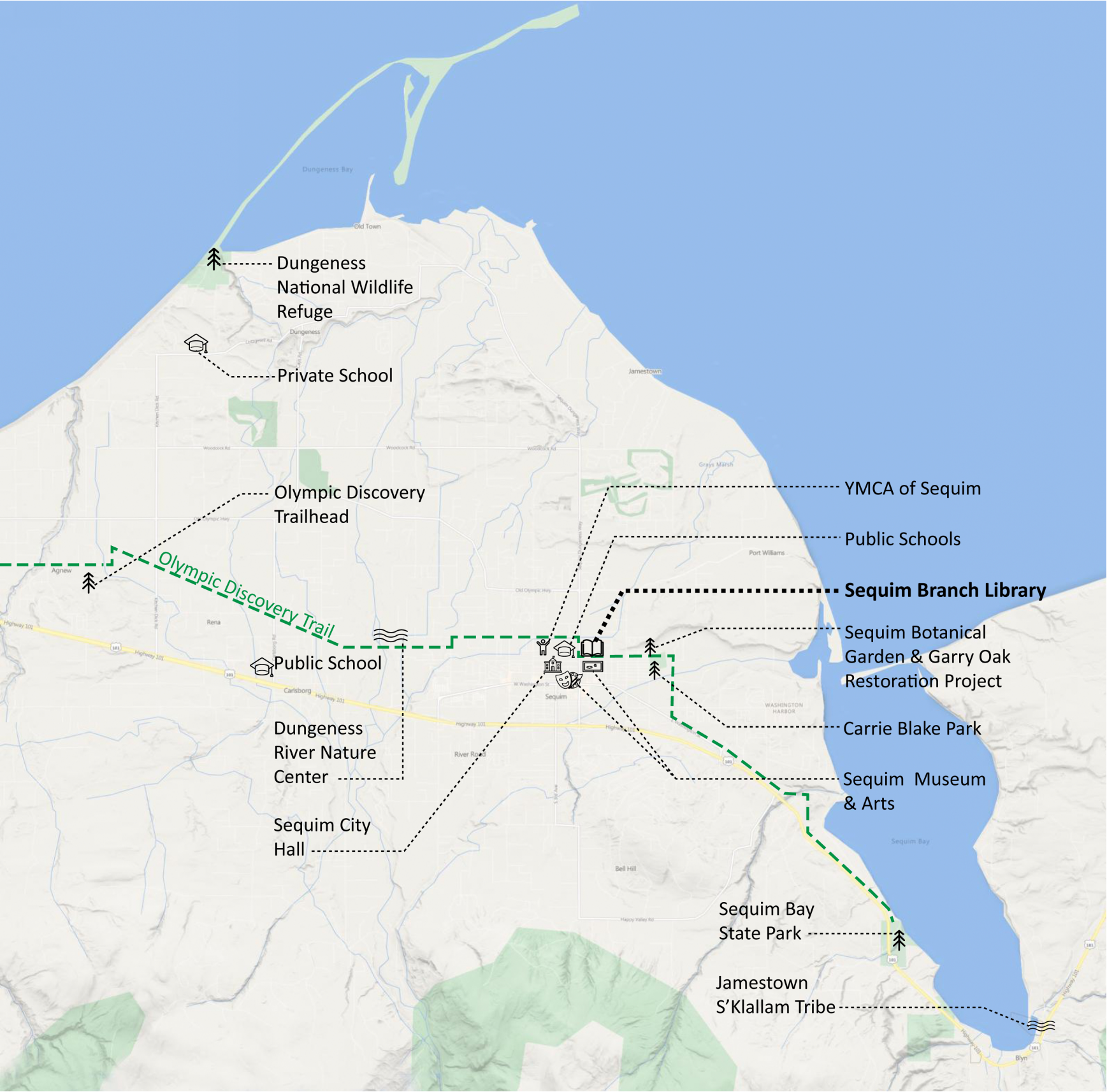
EXISTING

	PROGRAM	SQ. FT.
	Collections	2,569
	Children's	201
	Tween's	0
	Teen's	168
	Reading/Gathering	619
	Group Activity	838
	Public Computers	287
	Support Space	1,034
	Non-Program Space	539
	Total	6,255

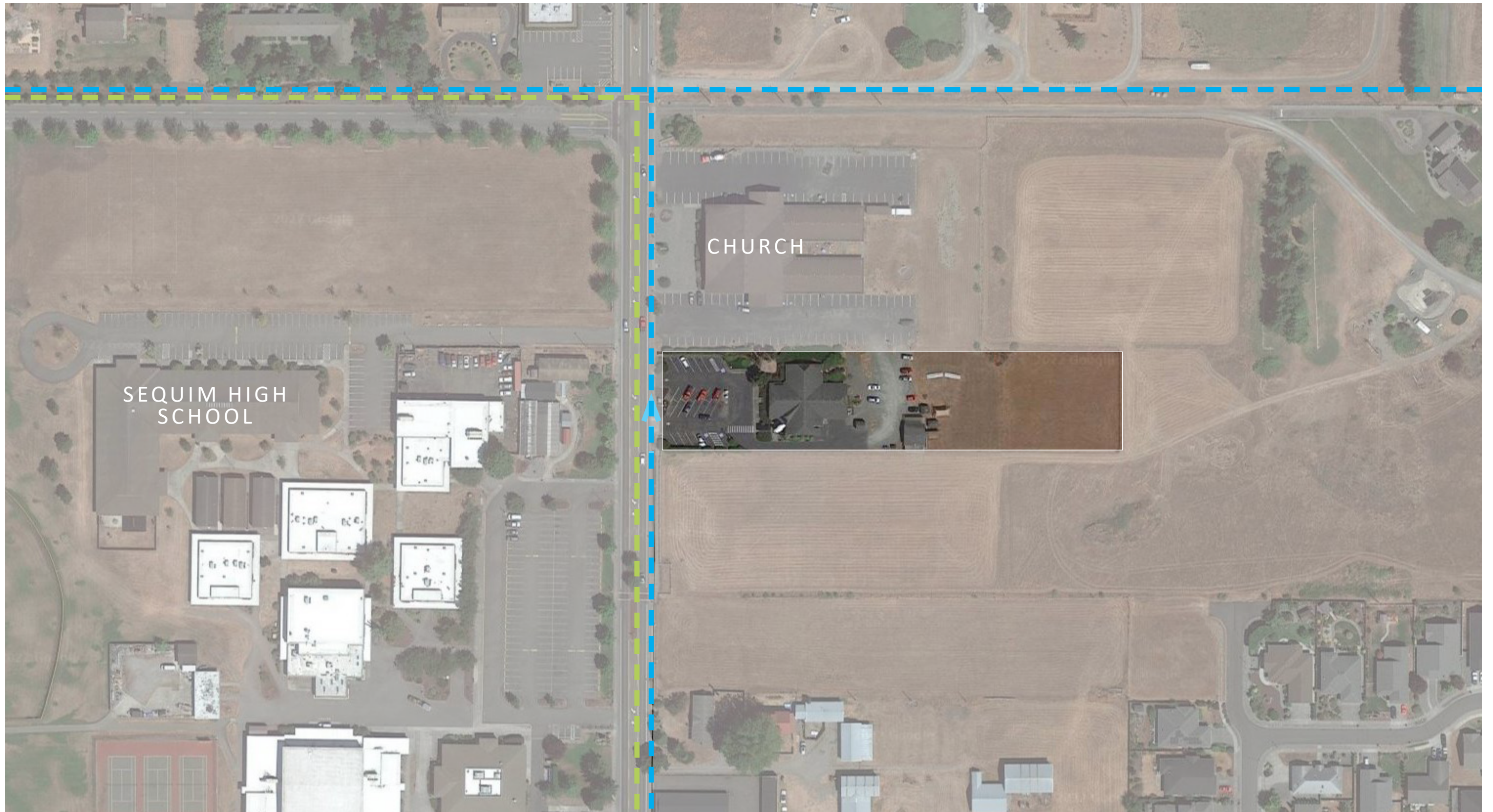


PROPOSED

	PROGRAM	SQ. FT.
	Collections	3,713
	Children's	335
	Tween's	0
	Teen's	200
	Reading/Gathering	830
	Group Activity	1,275
	Public Computers	285
	Support Space	1,629
	Non-Program Space	1,483
	Total	9,750



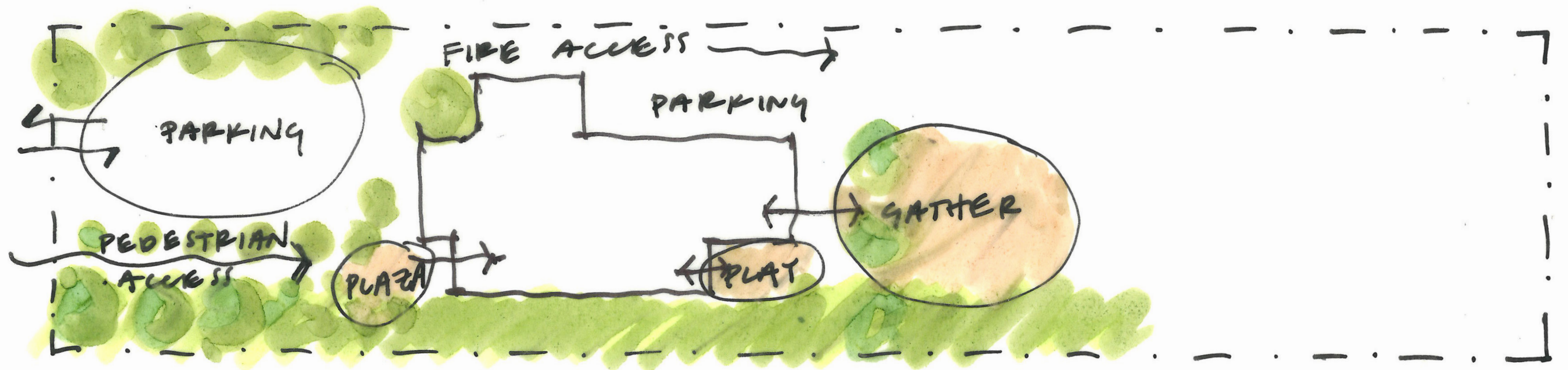
VICINITY MAP
COMMUNITY MEETING | SEPTEMBER 27, 2022



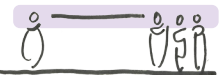
SITE AERIAL

COMMUNITY MEETING | SEPTEMBER 27, 2022

OLYMPIC DISCOVERY TRAIL | IRRIGATION DITCH



PLANNING PRINCIPLES



SIGHTLINES



DAYLIGHT



ACCESS TO EXTERIOR



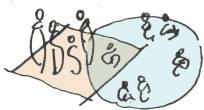
VIEWS TO OUTSIDE



ACTIVITY SEPARATION



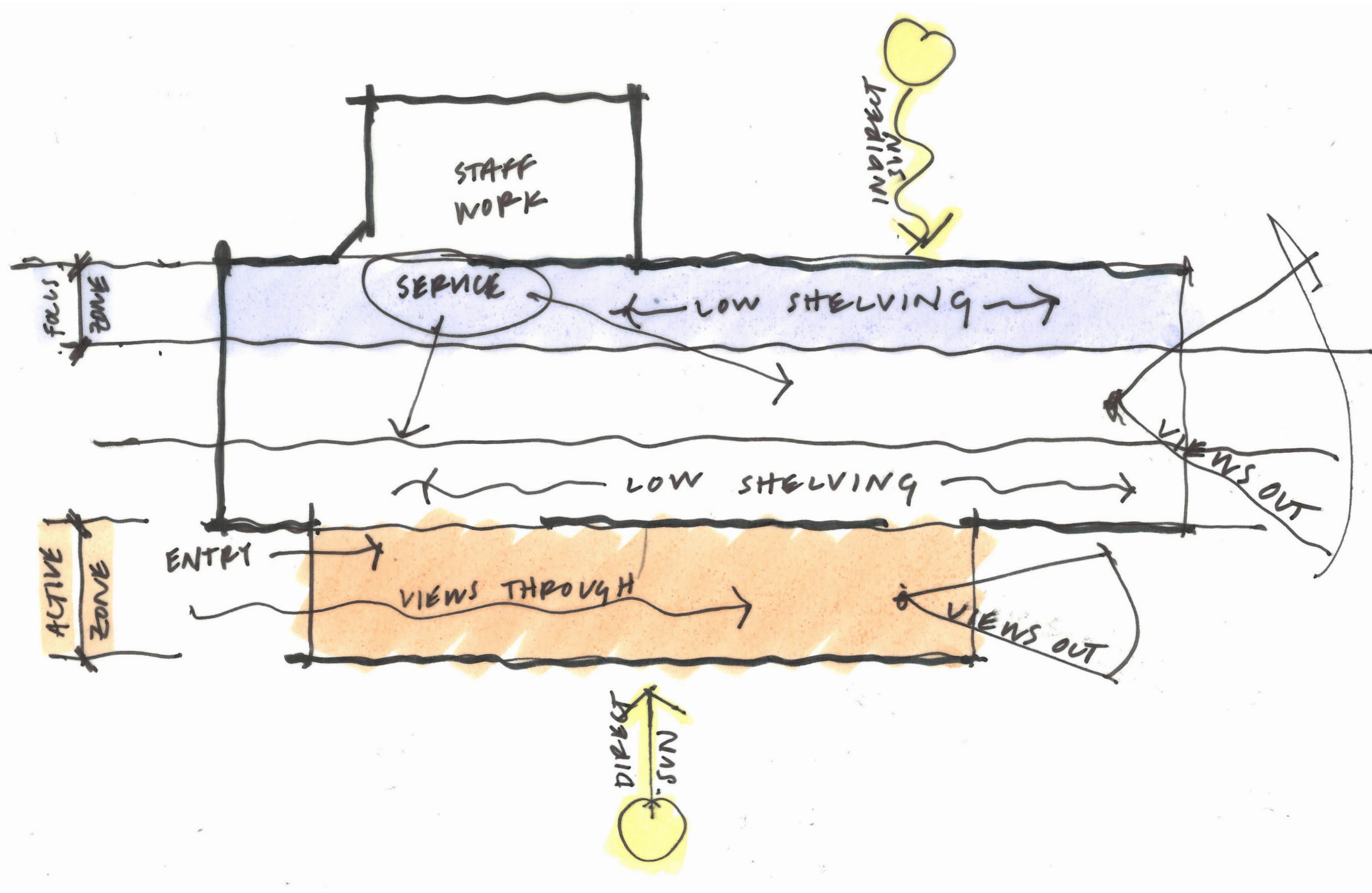
MOVEMENT



FLEXIBLE SPACE



AFTER HOURS USE

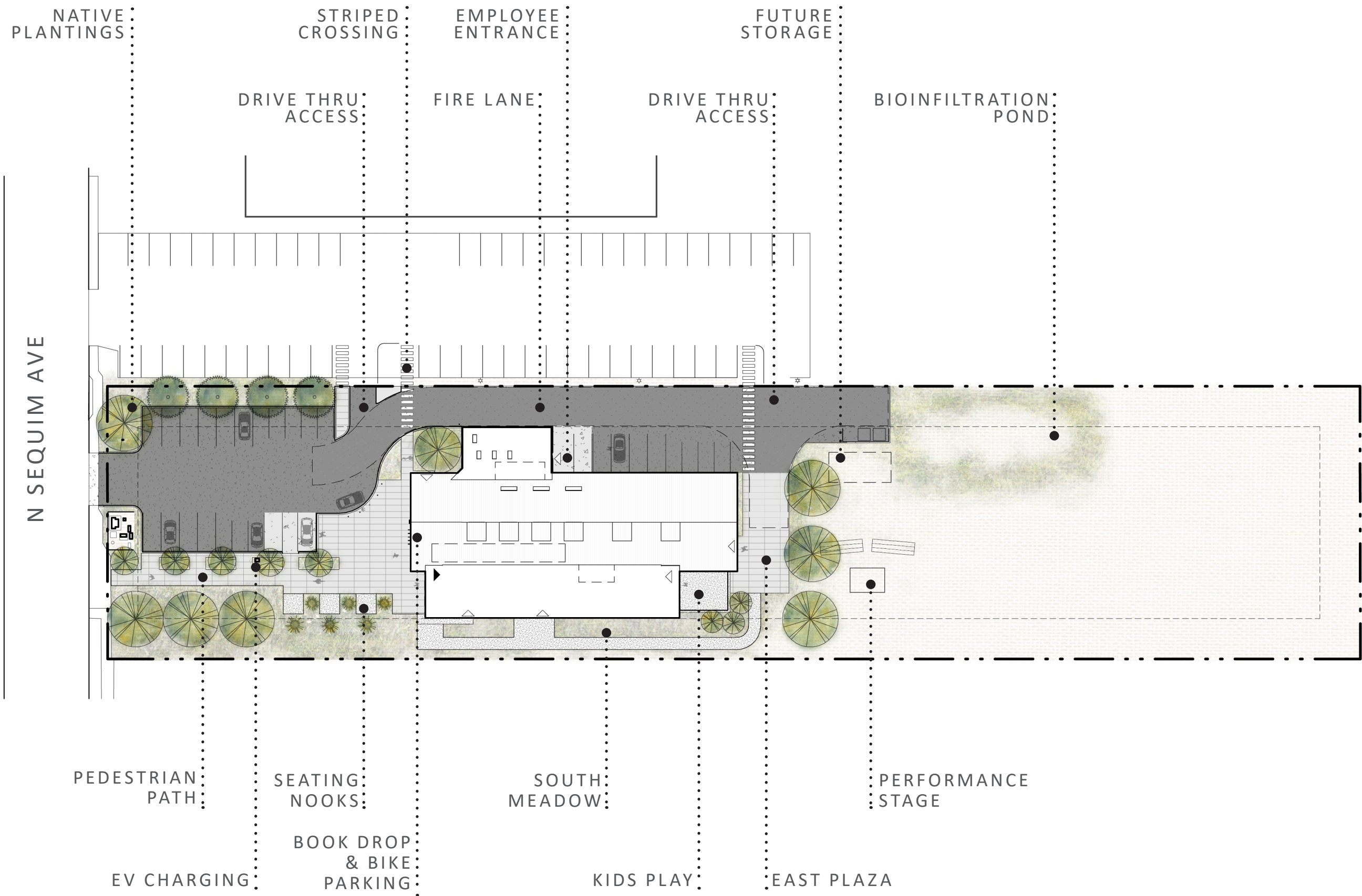


PLAN ORGANIZATION

COMMUNITY MEETING | SEPTEMBER 27, 2022

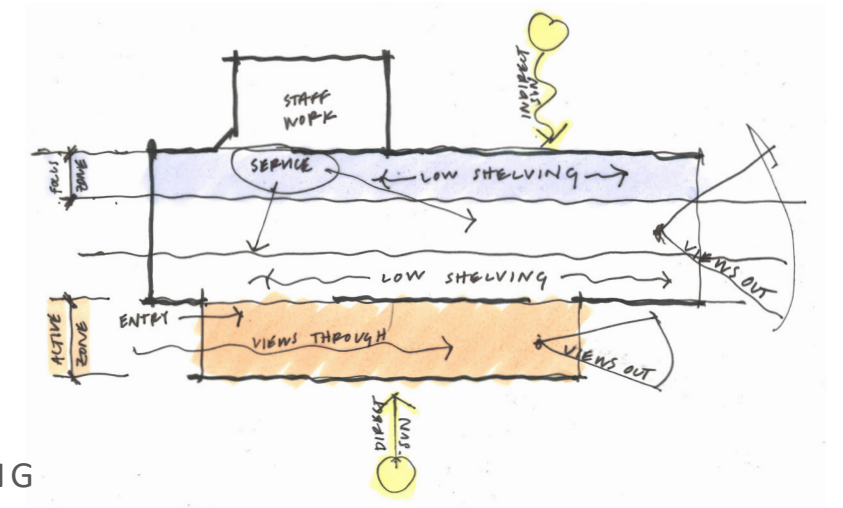
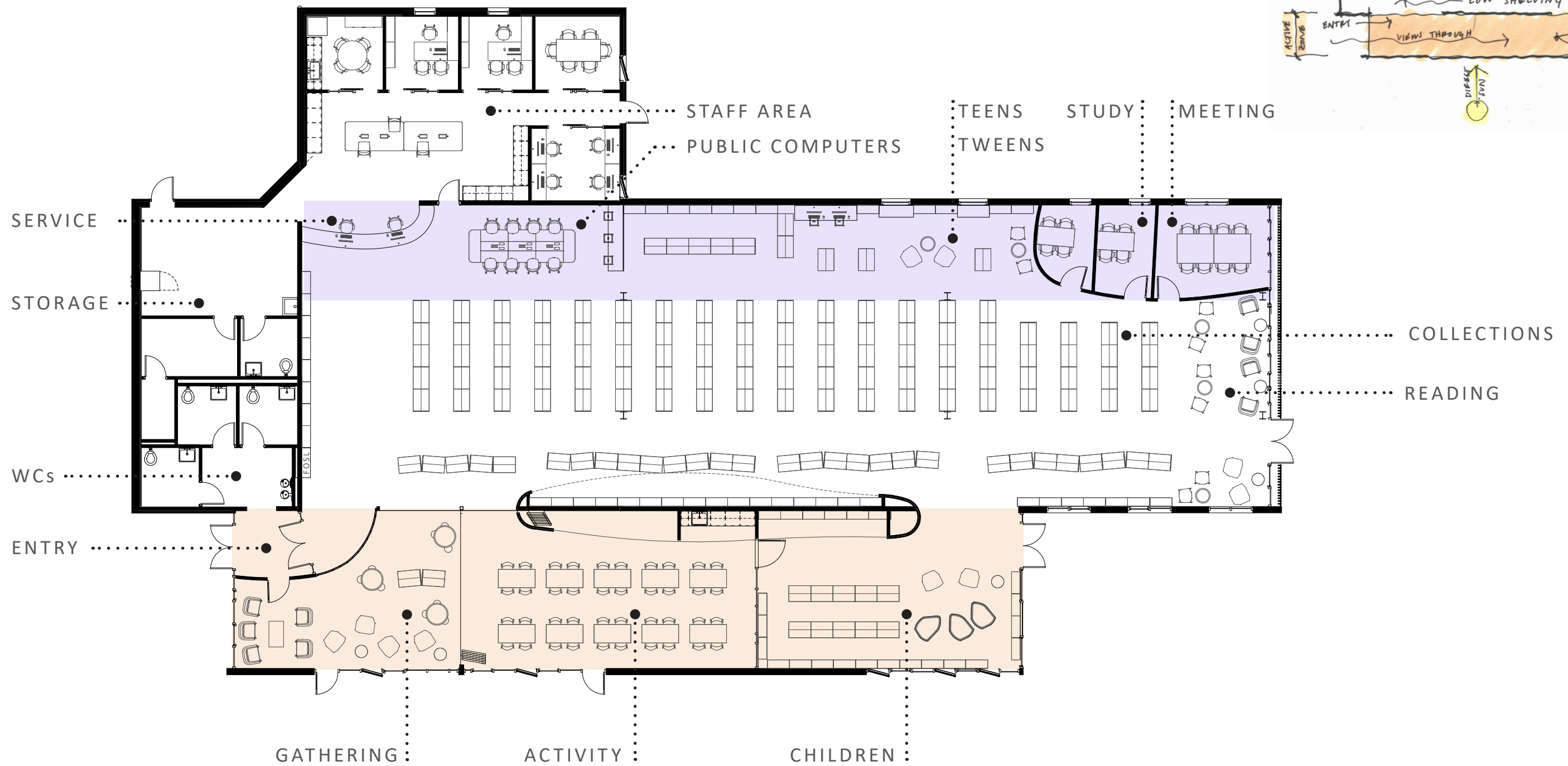


SHKS ARCHITECTS



SITE PLAN

COMMUNITY MEETING | SEPTEMBER 27, 2022

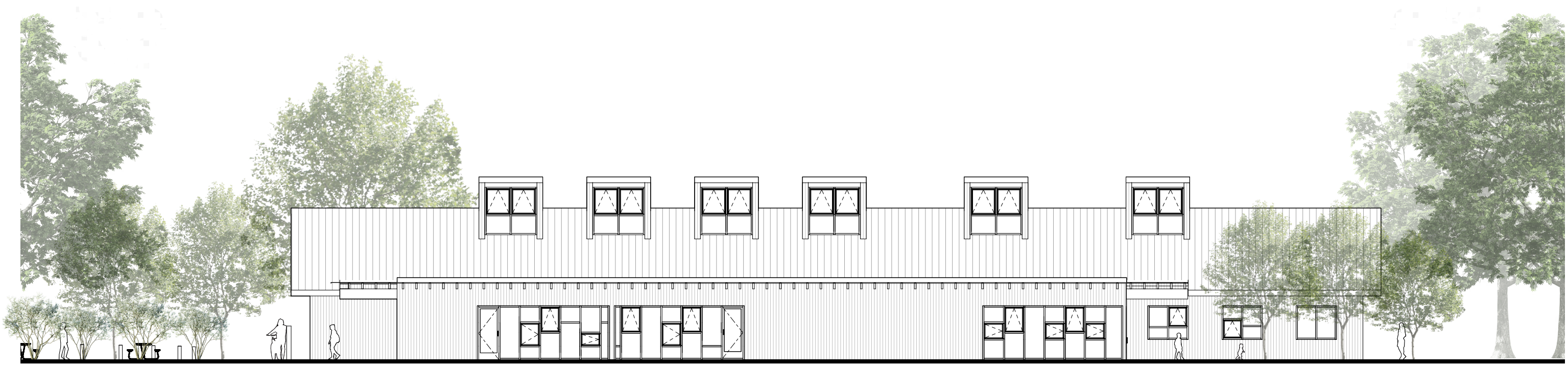


FLOOR PLAN

COMMUNITY MEETING | SEPTEMBER 27, 2022



SHKS ARCHITECTS



SOUTH ELEVATION



WEST ELEVATION

N-S SECTION

COMPUTERS

COLLECTIONS

STAFF AREA

GATHERING

ELEVATIONS AND SECTION

COMMUNITY MEETING | SEPTEMBER 27, 2022

SHKS ARCHITECTS



LEED v4 for BD+C: Major Renovation
Project Checklist

Project Name: NOLS Sequim Library
Date: 9/13/2022

Y ? N
1 1 1

Credit Integrative Process 1

3	4	9	Location and Transportation	16
			Credit LEED for Neighborhood Development Location	16
1			Credit Sensitive Land Protection	1
	1	1	Credit High Priority Site and Equitable Development*	2
1	1	3	Credit Surrounding Density and Diverse Uses	5
		5	Credit Access to Quality Transit	5
	1		Credit Bicycle Facilities	1
	1		Credit Reduced Parking Footprint	1
1			Credit Green Vehicles	1

7	3	0	Sustainable Sites	10
Y			Prereq Construction Activity Pollution Prevention	Required
1			Credit Site Assessment	1
1	1		Credit Site Development - Protect or Restore Habitat	2
1			Credit Open Space	1
3			Credit Rainwater Management	3
	2		Credit Heat Island Reduction	2
1			Credit Light Pollution Reduction	1

2	6	3	Water Efficiency	11
Y			Prereq Outdoor Water Use Reduction	Required
Y			Prereq Indoor Water Use Reduction	Required
Y			Prereq Building-Level Water Metering	Required
1	1		Credit Outdoor Water Use Reduction	2
1	2	3	Credit Indoor Water Use Reduction	6
	2		Credit Cooling Tower Water Use	2
	1		Credit Water Metering	1

17	9	7	Energy and Atmosphere	33
Y			Prereq Fundamental Commissioning and Verification	Required
Y			Prereq Minimum Energy Performance	Required
Y			Prereq Building-Level Energy Metering	Required
Y			Prereq Fundamental Refrigerant Management	Required
3	3		Credit Enhanced Commissioning	6
12	3	3	Credit Optimize Energy Performance	18
	1		Credit Advanced Energy Metering	1
	2		Credit Demand Response	2
2	1		Credit Renewable Energy Production	3
	1		Credit Enhanced Refrigerant Management	1
		2	Credit Green Power and Carbon Offsets	2

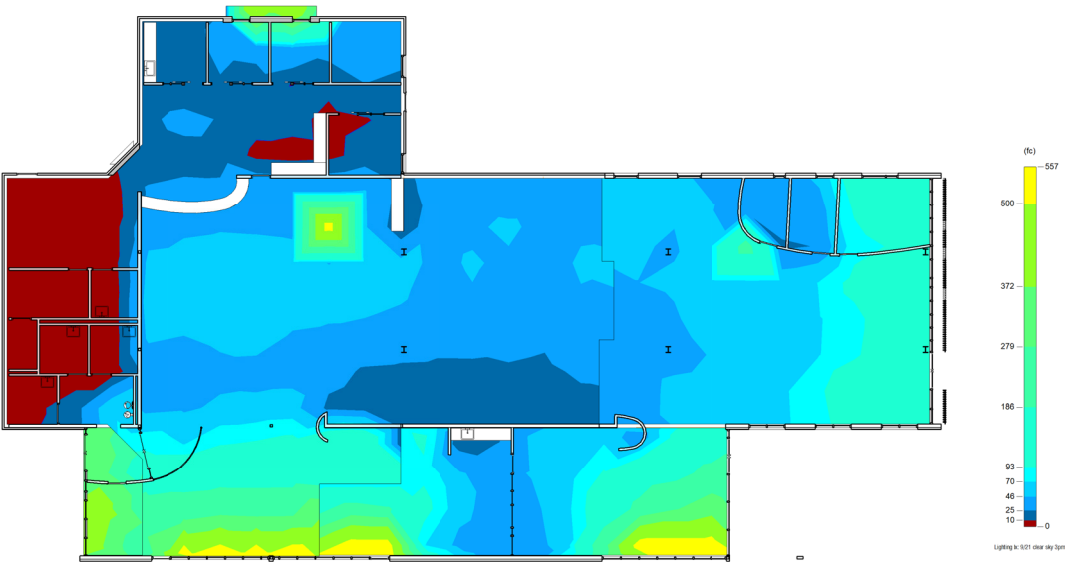
8	3	2	Materials and Resources	13
Y			Prereq Storage and Collection of Recyclables	Required
Y			Prereq Construction and Demolition Waste Management Planning	Required
2	1	2	Credit Building Life-Cycle Impact Reduction	5
2			Credit Building Product Disclosure and Optimization - Environmental Product Declarations	2
1	1		Credit Building Product Disclosure and Optimization - Sourcing of Raw Materials	2
1	1		Credit Building Product Disclosure and Optimization - Material Ingredients	2
2			Credit Construction and Demolition Waste Management	2

9	7	0	Indoor Environmental Quality	16
Y			Prereq Minimum Indoor Air Quality Performance	Required
Y			Prereq Environmental Tobacco Smoke Control	Required
	2		Credit Enhanced Indoor Air Quality Strategies	2
2	1		Credit Low-Emitting Materials	3
1			Credit Construction Indoor Air Quality Management Plan	1
1	1		Credit Indoor Air Quality Assessment	2
	1		Credit Thermal Comfort	1
1	1		Credit Interior Lighting	2
2	1		Credit Daylight	3
1			Credit Quality Views	1
1			Credit Acoustic Performance	1

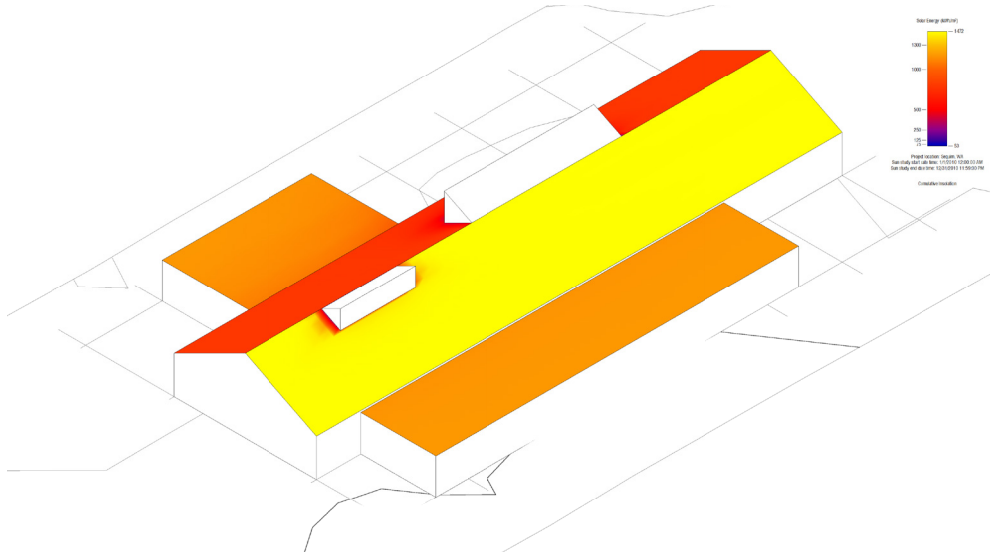
5	1	0	Innovation	6
4	1		Credit Innovation	5
1			Credit LEED Accredited Professional	1

2	2	0	Regional Priority	4
	1		Credit Regional Priority: I Rainwater Management: 3pts	1
	1		Credit Regional Priority: Indoor Water Use :4pts	1
1			Credit Regional Priority: Renewable Energy Production :2pts	1
1			Credit Regional Priority: IEPDs :1pt	1

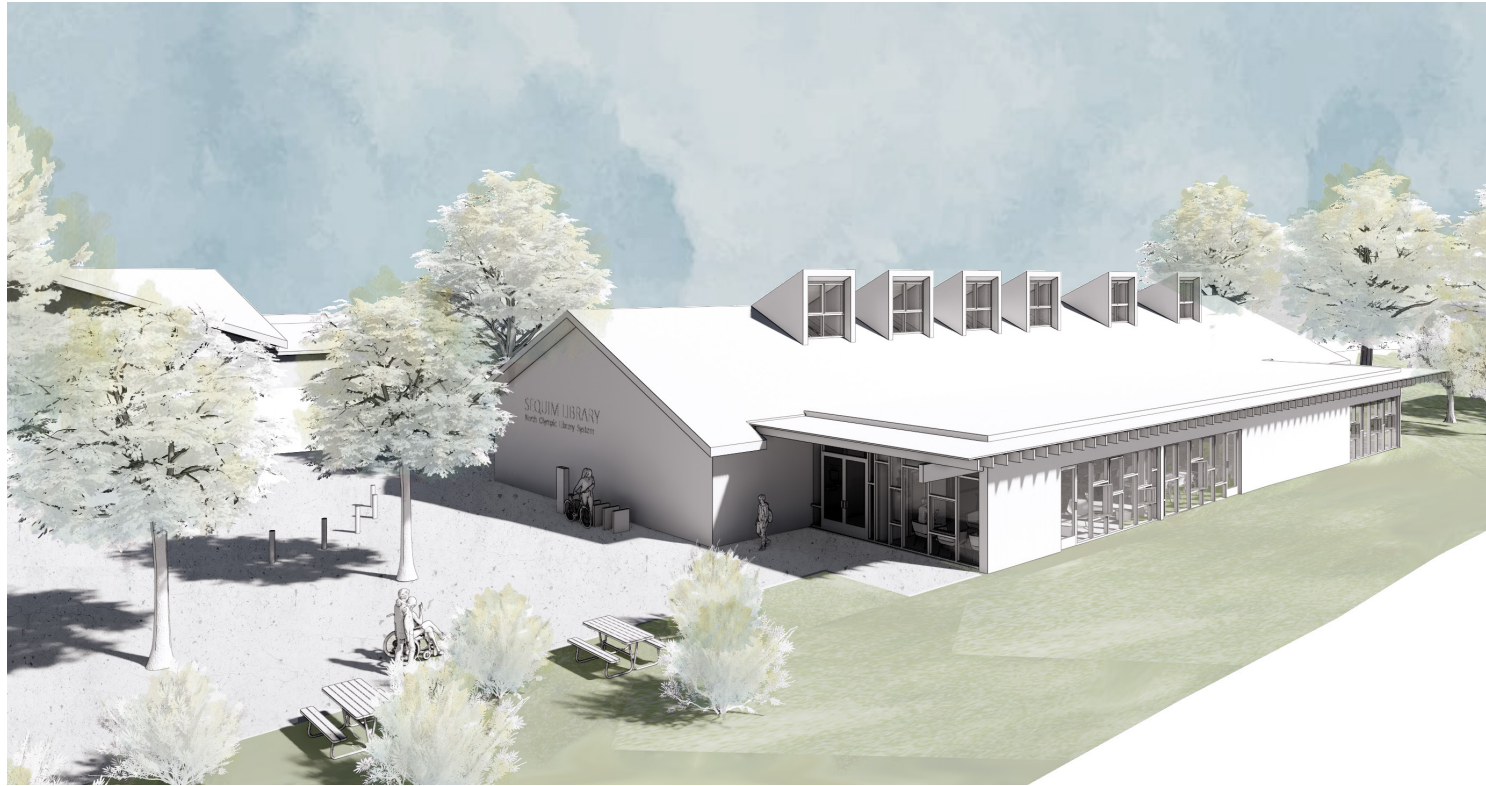
54	35	21	TOTALS	Possible Points: 110
Certified: 40 to 49 points, Silver: 50 to 59 points, Gold: 60 to 79 points, Platinum: 80 to 110				



DAYLIGHT ANALYSIS



SOLAR ACCESS



SOUTHWEST AERIAL



ENTRY APPROACH

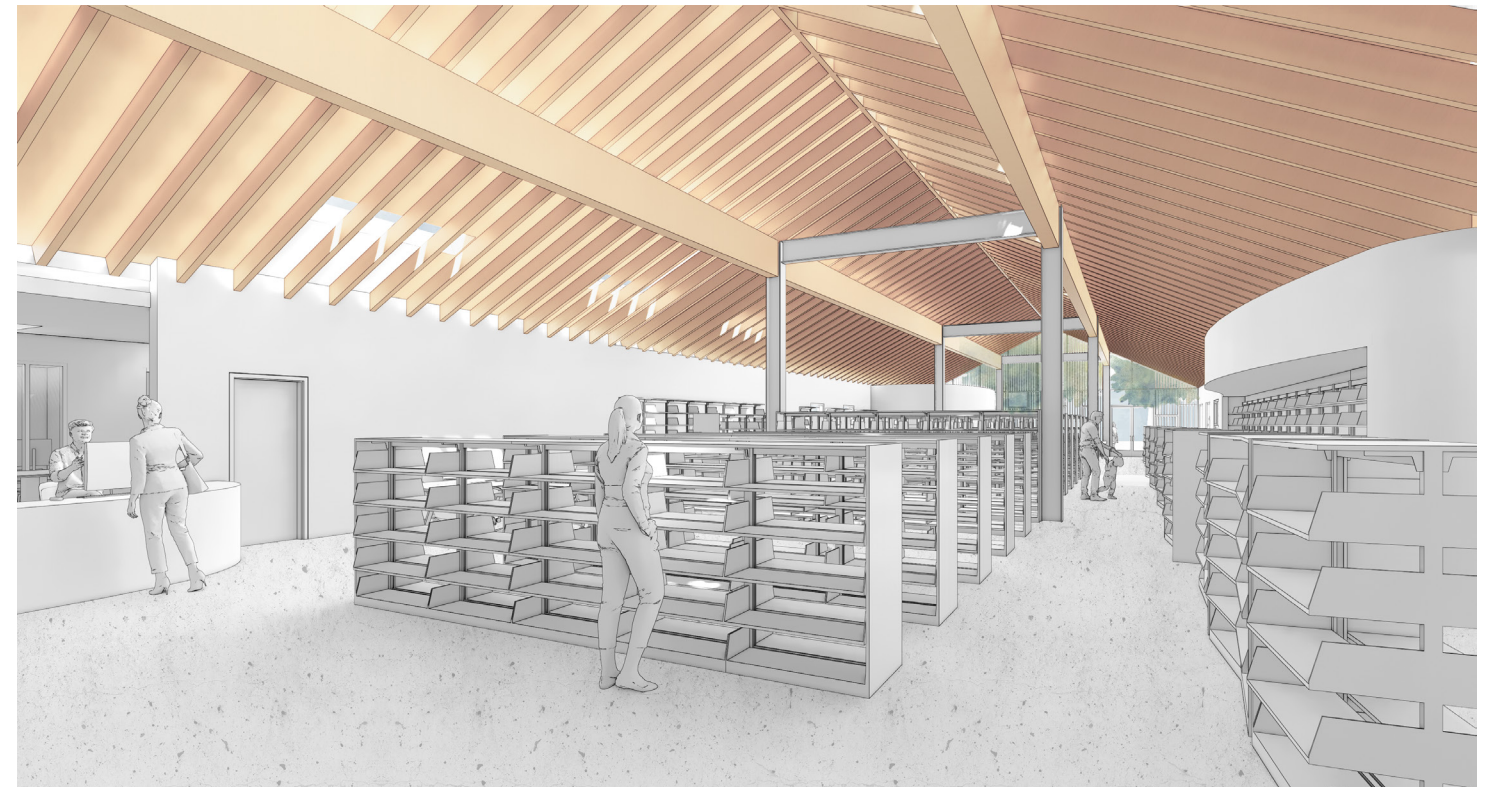
PERSPECTIVES

COMMUNITY MEETING | SEPTEMBER 27, 2022

SHKS ARCHITECTS



GATHERING - LOOKING EAST



COLLECTIONS - LOOKING EAST

PERSPECTIVES

COMMUNITY MEETING | SEPTEMBER 27, 2022

SHKS ARCHITECTS



READING - LOOKING EAST



EAST PLAZA

PERSPECTIVES

COMMUNITY MEETING | SEPTEMBER 27, 2022

SHKS ARCHITECTS

CONSTRUCTION COST SUMMARY

BUILDING RENOVATION + ADDITION	\$4,731,000
FIRE SPRINKLER SYSTEM	\$144,000
SITE WORK	\$1,223,000

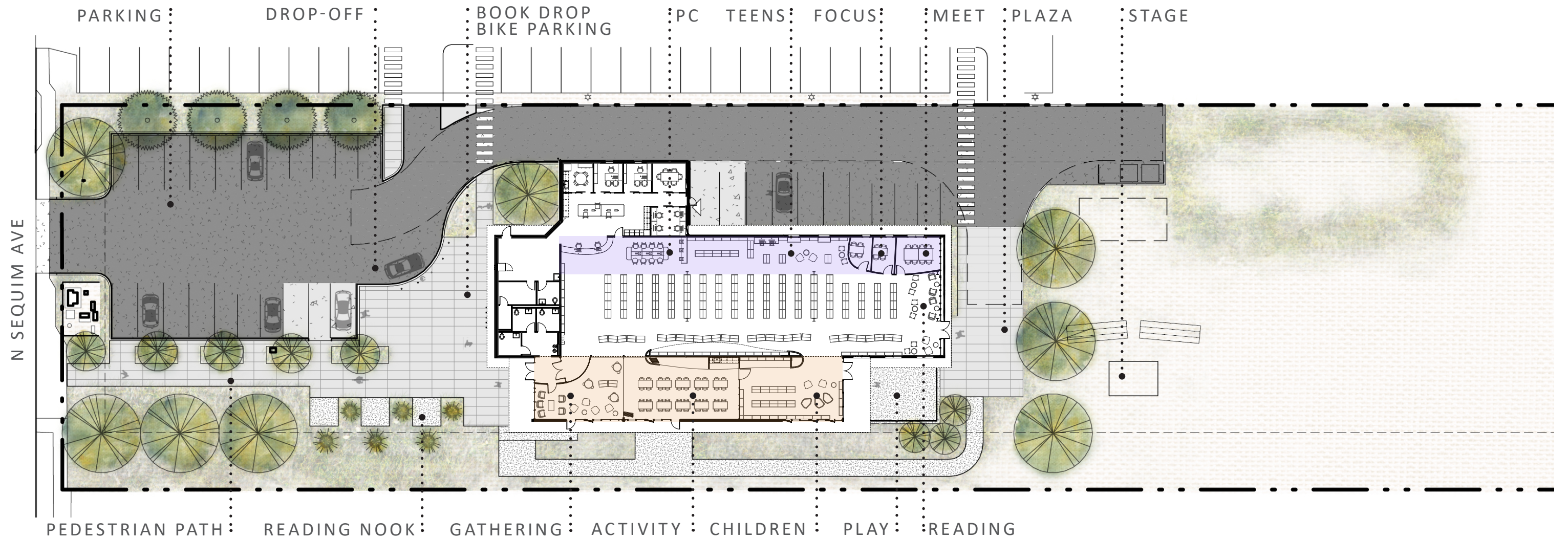
BASE SCOPE CONSTRUCTION COST	\$6,098,000
-------------------------------------	--------------------

ALTERNATE #1: NORTH EXTERIOR STORAGE	\$106,000
ALTERNATE #2: SOUTH EXTERIOR STORAGE	\$127,000



SOUTH ELEVATION

N-S SECTION



FEEDBACK

COMMUNITY MEETING | SEPTEMBER 27, 2022

